

Waterwatch

Water Quality Data Form

Site: ME - DEL 300

Date: 28 April 2024

Monitoring group: Elder Creek YW NA

Time: 9.30 am

Persons monitoring: Egi, Fleur, Dave + Sienna,
Till Sohol, Thianne

Circumstantial Hazard or Additional Risks

Hazard:

Risk:

Risk Control Measures:

Equipment
spare (disc)
batteries
for
calibrators

Safety Check

Has anything changed at your site recently?

Are there extreme weat conditions?

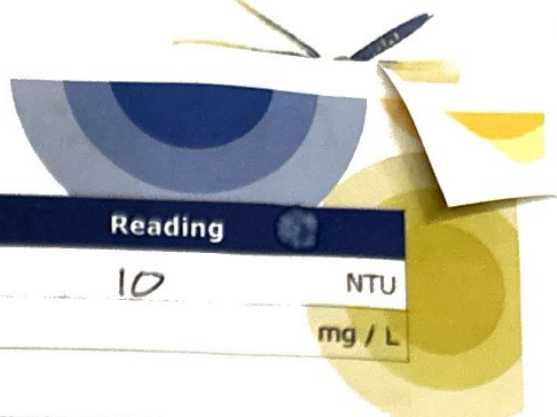
Any animals or insects nearby that pose a risk?



Parameter		Reading	
Ammonium		0.35	mg / L
Dissolved Oxygen	(Use data portal to auto calculate % saturation)	4	mg / L
Water Temperature	11°C	11	°C
Air Temperature	13.4	13.4	°C
pH	<input checked="" type="checkbox"/> Calibrated	7.0	Unit
Electroconductivity	<input type="checkbox"/> Calibrated	11000	µS / cm
Phosphate	(for colorimeter use conversion on data portal, or divide by 0.326 to calculate PO4-P mg/L)	0.25	mg / L

P.T.O

Waterwatch



Parameter	Reading	
Turbidity	10	NTU
Nitrate		mg / L

Comments:

Waterwatch

Observations

Weather

- Condition: Sunny Cloudy Overcast
 Raining Windy

Rainfall

- Last Rainfall: More than a week ago During the last week
 During the last 24 hours Raining now

Amount of rain (mm):

Water Flow

Flow Indicator (ML/Day):

- Estimate of flow: Flood / overbank Bankfull High
 Medium Low

Water Appearance

- Clear Stained brown Stained green
 Scummy Muddy
 Smelly Milky
 Foamy / frothy Oily

Other:

ford in ford

Stream Depth: 0-50cm 51cm - 99cm 1m - 2m Other

Stream Width: <2m 2 - 5m >5m Other

Drains

Waterwatch

Is water flowing from drain?

Colour

Odour

Litter Pollutants

Bottles

Plastic

Packets

Car bodies

Waxed cardboard

Petrol / diesel

Oil

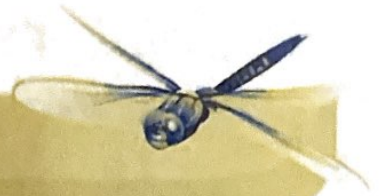
Cans

Polystyrene

Paper

Clothing

Other:



Macro-invertebrates data form

Monitoring Group Information

Monitoring site details

Site code: ME - DEL 300

Site description: 28 April Elster Creek. 2024.

Name of monitoring group

Persons monitoring: EGI Gifford, Peter, Terry, Dave + Sienna Cross, Taliah Stewart, Natalie Davey.

Date and time of monitoring: 28/4/2024. 9.30am.

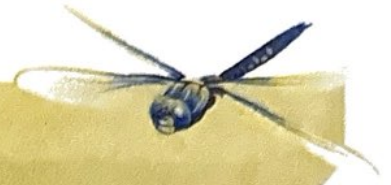
Macro-invertebrates

Sample Type

Edge Riffle

Please record your data below:

Common Name	Order	Bug Score	Abundance
Very Sensitive Macro-invertebrates			
Stonefly Nymph	Plecoptera	8	1
Mayfly Nymph	Ephemeroptera	7	
Caddisfly Nymph	Trichoptera	7	
Very Sensitive Macro-invertebrates			
Toebiters/Dobsonflies	Megaloptera	6	
Damselfly Nymph	Odonata	6	3
Dragonfly Nymph	Odonata	6	1
Freshwater Mussel	Class: Bivalvia	5	
Aquatic Caterpillars	Lepidoptera	5	
Freshwater Shrimp/Prawn	Decapoda	5	
Freshwater Yabby/Crayfish	Decapoda	5	
Water Mite	Acarina	5	
Freshwater Slater	Isopoda	5	



Macro-invertebrates data form

Common Name	Order	Bug Score	Abundance
Very Tolerant Macro-Invertebrates			
Hydra	Hydrozoa	4	
Beetle Larvae	Coleoptera	4	
True Bugs (Backswimmers, Water Boatman, Water Strider)	Hemiptera	4	70
Side Swimmer/Scud	Amphipoda	4	
Aquatic Beetles (Diving Beetles, Whirligig Beetles)	Coleoptera	3	
Round Worms	Nematoda	3	
Leech	Hirudinea	3	6
Freshwater Snails	Gastropoda	3	1
Flatworm	Turbellaria	3	
Very Tolerant Macro-Invertebrates			
Mosquito Larvae	Diptera	2	
Biting Midge Larvae	Diptera	2	
Fly Larvae	Diptera	2	
Segmented Worm	Oligochaeta	1	
Non Biting Midge (Bloodworms)	Diptera	1	21
	TOTALS		

Overall Bug Rating

- Very good
 Good
 Fair
 Poor

Total Abundance

200+
0-200

Fair

Poor

0-35

Very Good

Good

35+

Total Bug Score