

## Physical and Chemical Analysis Data Form

Waterwatch Melbourne Physical and Chemical Analysis

**Monitoring site details**

Site code:

YGR 020

Site description:

The Landing

**Name of monitoring group**

Persons monitoring:

Su D, Xavier, Jacky.

Date and time of monitoring:

0406 11:30 2/6/24.

**Please record your data below:**

Parameter	Reading	Comments
Air Temperature	Thermom 11° (12.6 EC) °C	
Water Temperature	12.4 (EC) °C	
Turbidity	39 FTU NTU	
pH	6.6 Unit	
Conductivity	241 µS / cm	
Dissolved Oxygen	5.1 mg / L	% Saturation
Phosphate <small>(If using Lamotte Smart2 Colorimeter multiply by 0.326 to calculate mg/L)</small>		mg / L
Ammonium	0.1 mg / L	
Nitrate		mg / L

**Observations and Notes:**

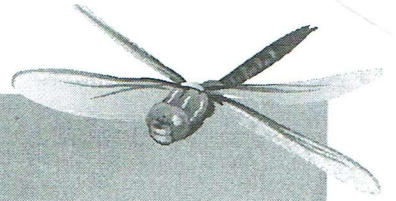
What has changed since last time you monitored?

Cleaner than last month.  
Erosion of bank next to landing still continuing.

What stands out about the site today?

Other observations:

3 coots, 2 black ducks. Aust Grebe, Pied Cormorant.



## Physical and Chemical Analysis Data Form

### Waterway Information

#### Rate of flow:

- Very fast     Fast     Normal base flow     Slow     Trickle  
 None     Permanent     Temporary     Other

If 'Other', please specify:

*Wind driven back into The Inlet.*

#### Type of flow:

- Rising     Steady     Falling     Peak     Dry     Pools / Puddles     Other

If 'Other', please specify:

#### Waterway Appearance:

- Clear     Muddy     Smelly     Frothy     Scummy  
 Oily     Discoloured     Milky     Stained brown     Other

If 'Other', please specify:

*Clear to about 30 cm*

Waterway depth: 750 cm (0 to 3000cm)

Waterway width: \_\_\_\_\_ m (0 to 100m)

#### Weather:

- Sunny     Cloudy     Overcast     Showers     Rain  
 Hail     Windy     Foggy     Other

If 'Other', please specify:

#### Last rainfall:

- Raining now     Last 24hrs     Last 3 days     Last 7 days     More than a week ago

*4mm*

#### Litter / Pollutants (record no.):

- \_\_\_ Cans    \_\_\_ Paper    \_\_\_ Clothing    \_\_\_ Oil (m<sup>2</sup>)  
 \_\_\_ Food Packets - *foil*    *drink* \_\_\_ Plastic     Polystyrene    \_\_\_ Car bodies  
 \_\_\_ Waxed Cardboard    \_\_\_ Bottles    \_\_\_ Petrol/Diesel (m<sup>2</sup>)    \_\_\_ Other (specify)